

# ScanBooster Designer Studio™

## Low cost JTAG/Boundary Scan tester



- Low cost package (Hardware & Software)
- Fast application development cycle
- Powerful software development environment
- Design, production and service applications
- Flexible and expandable with multiple options
- Fully compatible to JTAG/Boundary Scan platform SCANFLEX®

## Key advantages and features

### Excellent price to performance ratio

The ScanBooster Designer Studio is targeted for design, production and services personnel looking for a fast turnaround in terms of application development. The system comes packaged with hardware and software tools that can be used right out of the box.

### Multiple application levels (IC, Test, ISP and Systems)

ScanBooster Designer Studio's feature set targets various application levels like:

- Infrastructure and Interconnect Testing
- Internal Device Test (INTEST/BIST)
- Cluster/Device Testing
- PLD/FPGA Testing
- Memory Test (SRAM, DRAM, NAND, NOR, ...)
- Edge Connector Testing
- Analogue Signal Testing
- Internal Flash Programming
- External Flash Programming
- Hardware Verification

### Powerful Software Development Environment

CASCON GALAXY® software is a completely integrated solution with comprehensive model library and Automated Test Program Generation (ATPG) tools.

It also includes:

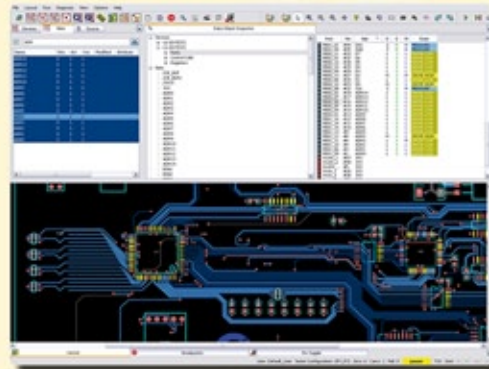
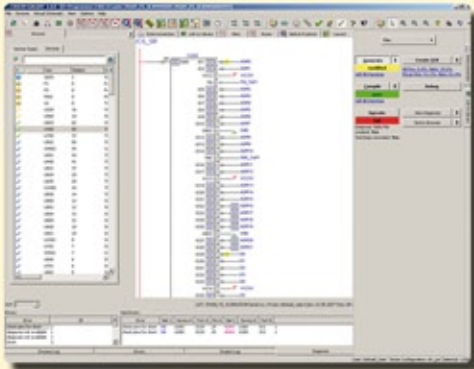
- Over 80 CAD readers
- Net and Pin level diagnostics
- Graphical hardware debugging
- Vector browsing and register watching
- Single/batch executors
- Integration with In-circuit, MDA & Flying Probers

# ScanAssist

## Flexible and expandable architecture



Numerous options and full compatibility allows for upgrading the ScanBooster Designer Studio as your needs change. All work can be reused at all stages of the product lifestyle. Some options are:



### Scan Vision III with options:

- Virtual Schematic Visualizer
- True Schematic Visualizer
- Layout Visualizer
- Interactive PIN Toggler

### Interactive PIN Toggler enables:

- Control your circuit using the JTAG/Boundary Scan chain
- Automatic control through non Boundary Scan parts (Buffers, logic, etc)
- No firmware or software has to be loaded
- Quickly control the signals you want and measure the results
- Automatically cross reference between layout and schematic
- Record, edit and play back steps to quickly create custom tests



### TAP extension option:

- Second TAP for Scan Booster
- Upgrade to SCANFLEX® platform

## Key technical highlights

- Software configurable TAP ports
- Programmable TCK up to 16 MHz
- 32 dynamic programmable I/O
- 2 Analogue (10 bit) I/O
- 6 general purpose I/O and trigger lines
- Automatic Test Program Generation (ATPG)
- Pin failure detection support
- Advanced Vector browser
- Multi Mode Debugger
- Built-in algorithmic JTAG/Boundary Scan language

GOPEL electronics Ltd  
Compass House, Vision Park  
Chivers Way, Histon  
Cambridgeshire  
CB24 9AD / United Kingdom

Phone: +44-1223-257761  
Fax: +44 8451-309004  
Email: sales@goepel.co.uk

[www.goepel.co.uk](http://www.goepel.co.uk)

 **GOPEL**  
electronics  
*Get the total Coverage!*