



## PRECIDOSE 2K

*Volumetric dispensing system*



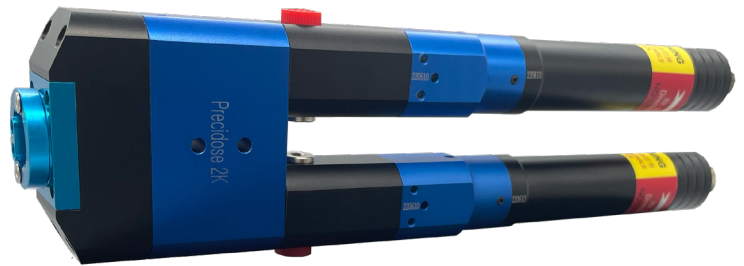
# PRECIFLUID

[www.precifluid.com](http://www.precifluid.com) • [contact@precifluid.com](mailto:contact@precifluid.com)

## Volumetric dispensing system Precidose 2K

### Advantages

- Continuous volumetric dispensing
- Dispensing independent of viscosity variation
- Prevents from shear, pulsation and squeezing of the fluid
- Servomotor technology
- Programmable speed and quantity
- Manual or automatic mode
- RSuck-back feature available
- Mixing ratio from 1:1 to 12:1



### Presentation

The Precidose 2K is a concentration of technology for your dispensing processes. Compatible with different kind of fluids (from liquids to more viscous), this volumetric dispenser combines speed and precision while maintaining a simple and ergonomic structure.

The Precidose 2K is a two-component volumetric dispensing system.

Based on the progressive cavity pump system, the Precidose allows to dispense liquid to pasty products (up to 1 000 000cps). The dispense is neat, highly precise and repeatable (99%) independently of viscosity variations.

Compact and ergonomic, suitable with manual application it also can be easily integrated on an automatised process or an assembly line thanks to a bracket system (optional).

## Characteristics

Description	Precidose 2K - 03	Precidose 2K - 10	Precidose 2K - 60	Precidose 2K - 200
Ref.	PDS762-03	PDS762-10	PDS762-60	PDS762-200
Dimensions	L 250 mm	L 250 mm	L 290 mm	L 310 mm
Weight	900 g	930 g	960 g	980 g
Inlet fluid pressure	0 - 6 bars	0 - 6 bars	0 - 6 bars	0 - 6 bars
Outlet fluid pressure	16-20 bars	16-20 bars	16-20 bars	16-20 bars
Viscosity	liquid to pasty	liquid to pasty	liquid to pasty	liquid to pasty
Flow rate	0,08 - 0,8 ml/min	0,3 - 3 ml/min	1 - 12,0 ml/min	3 - 30,0 ml/min
Min. quantity dispensing	0,001 ml	0,002 ml	0,008 ml	0,03 ml
Dispensing accuracy	± 1 %	± 1 %	± 1 %	± 1 %
Stator material	FKM, NBR, EPDM, HNBR, FFKM	FKM, NBR, EPDM, HNBR, FFKM	FKM, NBR, EPDM, HNBR, FFKM	FKM, NBR, EPDM, HNBR, FFKM
Inlet fitting	G 1/8"	G 1/8"	G 1/8"	G 1/8"
Outlet fitting	Luer-Lock	Luer-Lock	Luer-Lock	Luer-Lock
Fluid section material	SUS304, SUS316L, ALUMINIUM	SUS304, SUS316L, ALUMINIUM	SUS304, SUS316L, ALUMINIUM	SUS304, SUS316L, ALUMINIUM
Functioning condition	10 - 40 °C	10 - 40 °C	10 - 40 °C	10 - 40 °C
Repeatability	> 99 %	> 99 %	> 99 %	> 99 %

### Presentation

The Precidose 2K allows to dispense an exact volume (0,001 ml per rotation) for applications requiring high precision.

Its conception relies on progressive cavity pump principal where its core components - a rotor and stator - form a perfectly sealed metering chamber.

Precidose 2K is available in four sizes – 03, 10, 60 et 200 – to use in a large range of applications within different sectors automotive, electronics, medical devices and other industries.

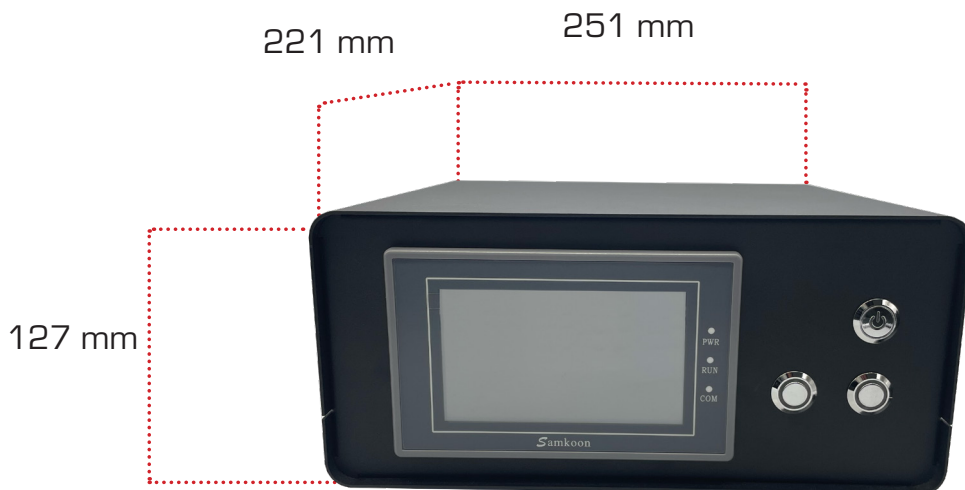
During rotation, the fluid flows from one sealed cavity to the next, allowing for constant volumetric dispensing independently of fluid viscosity or its variation over time. Surrounding factors, such as alteration of fluid pressures and the «full-to-empty» effect in syringe barrels, do not alter the amount dispensed.



The equipment can operate in two modes:

- **Manual** : As long as the cycle is activated by the foot pedal or closed contact, the equipment dispenses at a programmed speed. When it stops dispensing a suck-back can be programmed.
- **Automatic** : At each impulse ( by foot pedal, finger switch or automatic contact) the dispenser performs a dispense accordingly to the saved parameters of the selected program.

### Controller



### CHARACTERISTICS

Dimensions L*I*H	251 x 221 x 127
Weight	3,4 Kg
Power supply	100-240V
Maximum electrical consumption	2A
Range of input frequencies	50-60Hz
Output voltage	9V
Output current	1,5A
Output power	13,5W
Interface	Touchscreen
Start signal	Foot pedal, finger switch or dry contact
End of cycle signal	Dry contact - duration 500ms



Precifluid dispensing is an European company specialised in fluid dispensing and participating in the development of industrial sectors.

Thanks to its expertise, its knowledge and its R&D department, Precifluid dispensing brings to its customers a performant and efficient technology to optimise their production and operating lines.

---

### Our associated services

In addition to the manufacture of dispensing equipment, we also provide installation and servicing of our equipment.

We support our customers in all their industrial processes

- Engineering
- Achats
- Maintenance



# PRECIFLUID

[www.precifluid.com](http://www.precifluid.com) • [contact@precifluid.com](mailto:contact@precifluid.com)